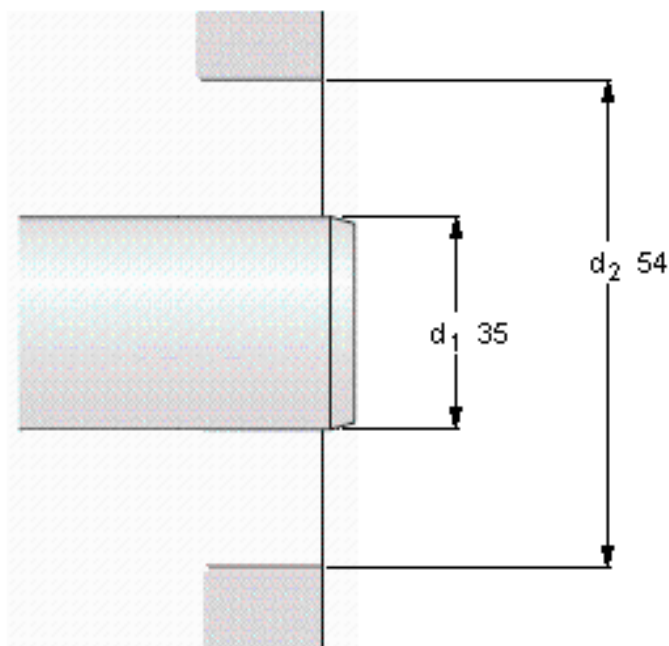
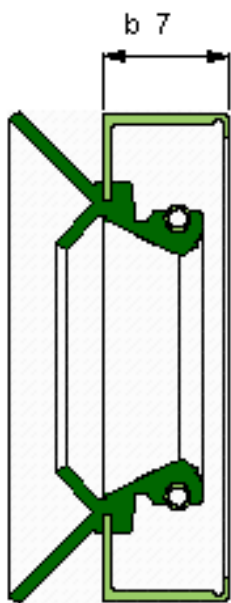


SKF 14020参数

主要尺寸	d_1	35	mm	-
	d1	54	mm	-
	b	7	mm	-
设计	设计	HMSA92	-	-
密封唇材料	密封唇材料	P	-	-
Pressuredifferential [MPa/psi]	Pressure differential [MPa / psi]	-	-	-
型号	型号	14020	-	-
美国图纸编号	美国图纸编号	14020	-	-
注释	注释	流体动压唇	-	-

SKF 14020图片



Permissible operating temperature [°C / °F]

最小	最大
-40 / -40	150 / 302
	short periods
	175 / 347

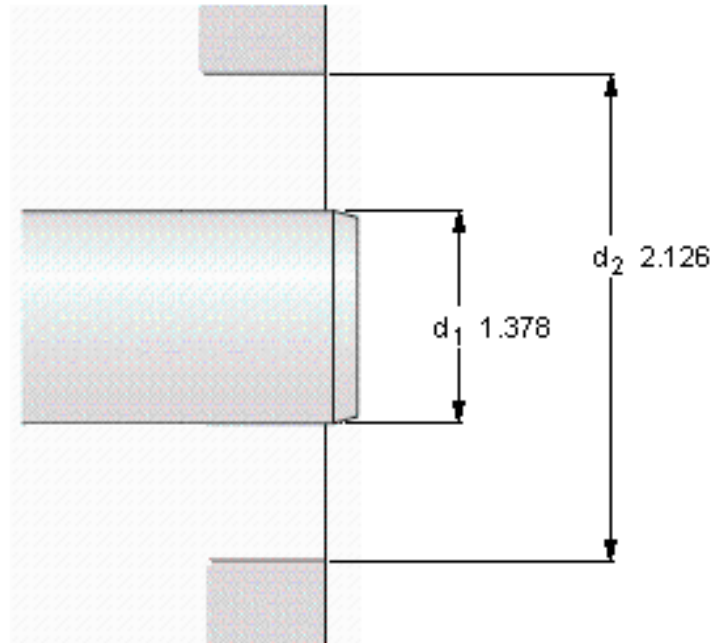
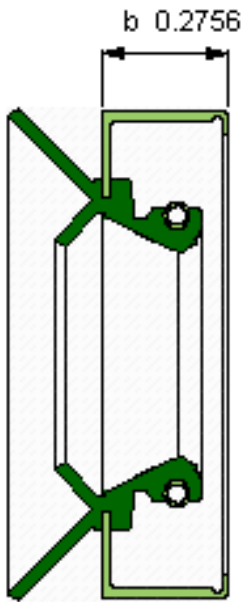
Rotational speed [r/min]

-
at circumferential speed [m/s / ft/s]
 - / -

Pressure differential [MPa / psi]

- / -

See also "Permissible speeds" and "Chemical and thermal resistance"



Permissible operating temperature [°C / °F]

最小	最大
-40 / -40	150 / 302
	short periods
	175 / 347

Rotational speed [r/min]

-
at circumferential speed [m/s / ft/s]
 - / -

Pressure differential [MPa / psi]

- / -

See also "Permissible speeds" and "Chemical and thermal resistance"

参考资料: <http://www.sozhou.com/p/d2458429.html>